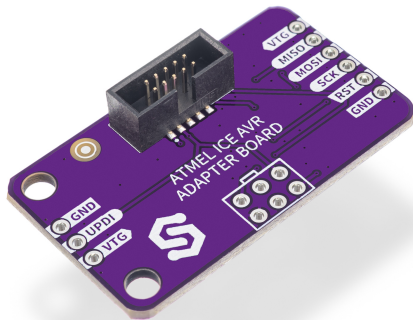




MAKERICE ADAPTER AVR



Weight 10 g

DESCRIPTION

Upgrade your AVR programming workflow with the Atmel ICE compatible **MakerICE Adapter AVR**. This passive breakout board connects the 10-pin IDC port of the MakerICE to two common AVR programming interfaces: the 6-pin ICSP/ISP header and the 3-pin UPDI header.

Designed for simplicity and reliability, the adapter routes signals directly, with no complex wiring, jumpers, or extra configuration needed. Just plug your MakerICE into the 10-pin connector, select the appropriate header for your AVR device, and start programming or debugging.

Perfect for modern AVR development, including UPDI-based tinyAVR, megaAVR-0, and AVR Dx series, as well as classic ISP-programmed ATmega and ATtiny devices. Ideal for engineers, educators, and makers who want a clean, compact, and dependable programming setup.

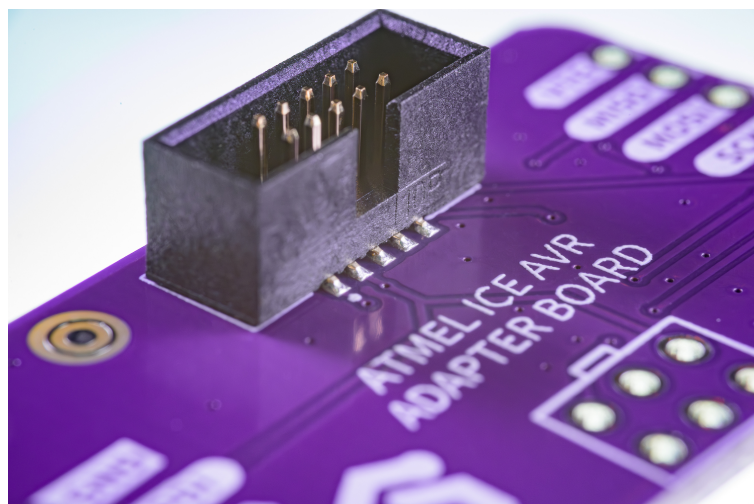
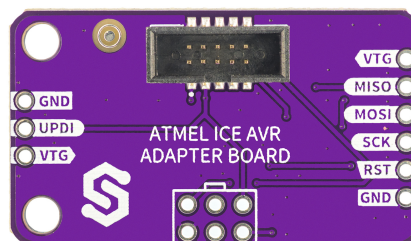
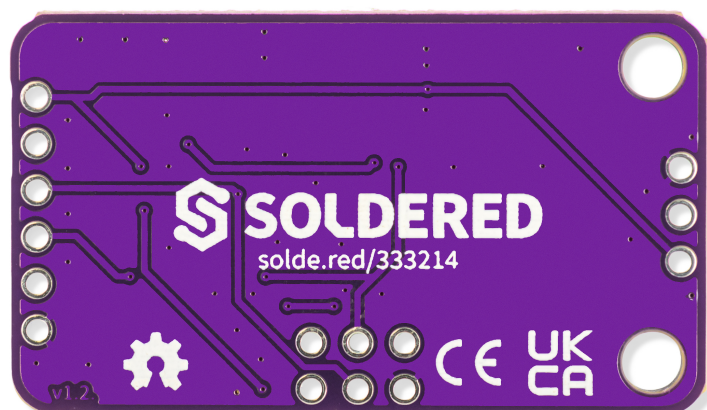
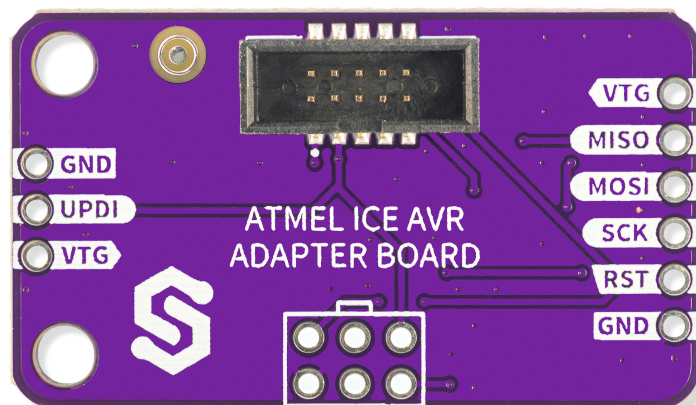
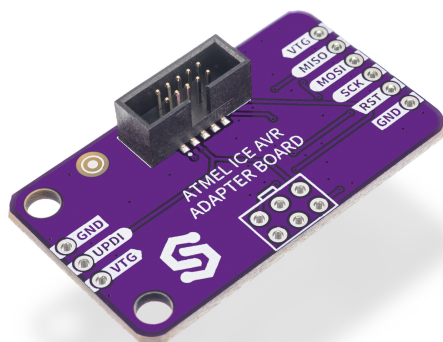
FEATURES

- ISP Support: In-System Programming for classic AVR microcontrollers
- UPDI Support: Unified Program and Debug Interface for modern AVR devices
- Direct Connection: No wiring or jumpers, just plug in MakerICE and program
- 10-Pin IDC Input: Standard programming connector
- 6-Pin ISP Header: Compatible with Arduino and standard ICSP pinout
- 3-Pin UPDI Header: Simple connection for single-wire UPDI programming
- Broad Compatibility: Atmel ICE compatible, works with most AVR devices that support ISP or UPDI
- Compact Design: Saves bench space and reduces setup clutter

USEFUL LINKS



OTHER IMAGES





Weight

10 g